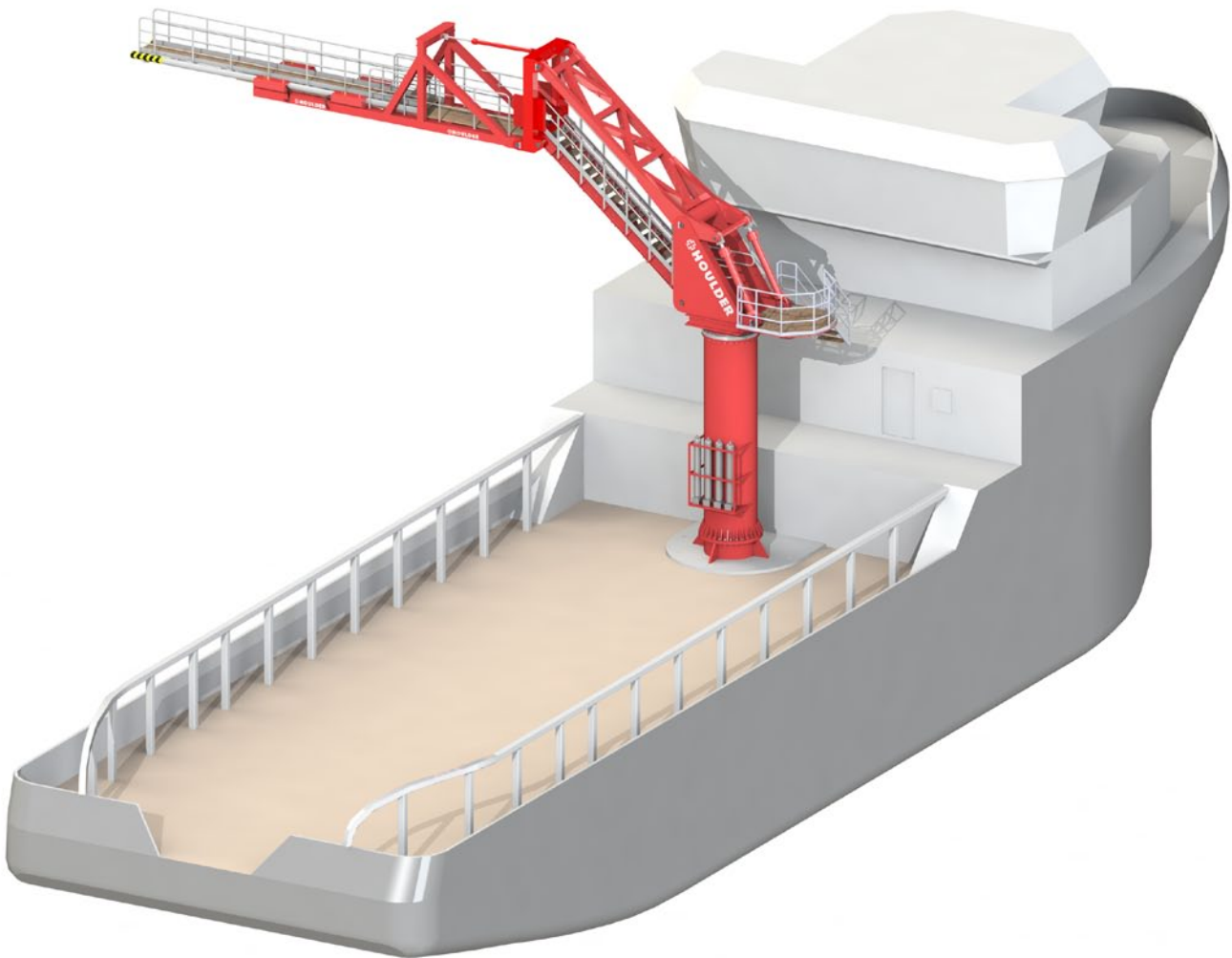


PERSONNEL TRANSFER SYSTEM

Offshore Walk To Work Access



Designed for DP offshore support vessels, the Personnel Transfer System provides an efficient and safe method of transferring people to and from offshore structures.

The hydraulically operated gangway provides both active and passive vessel motion compensation - creating a secure walk to work platform in seas of up to 3m significant wave height.

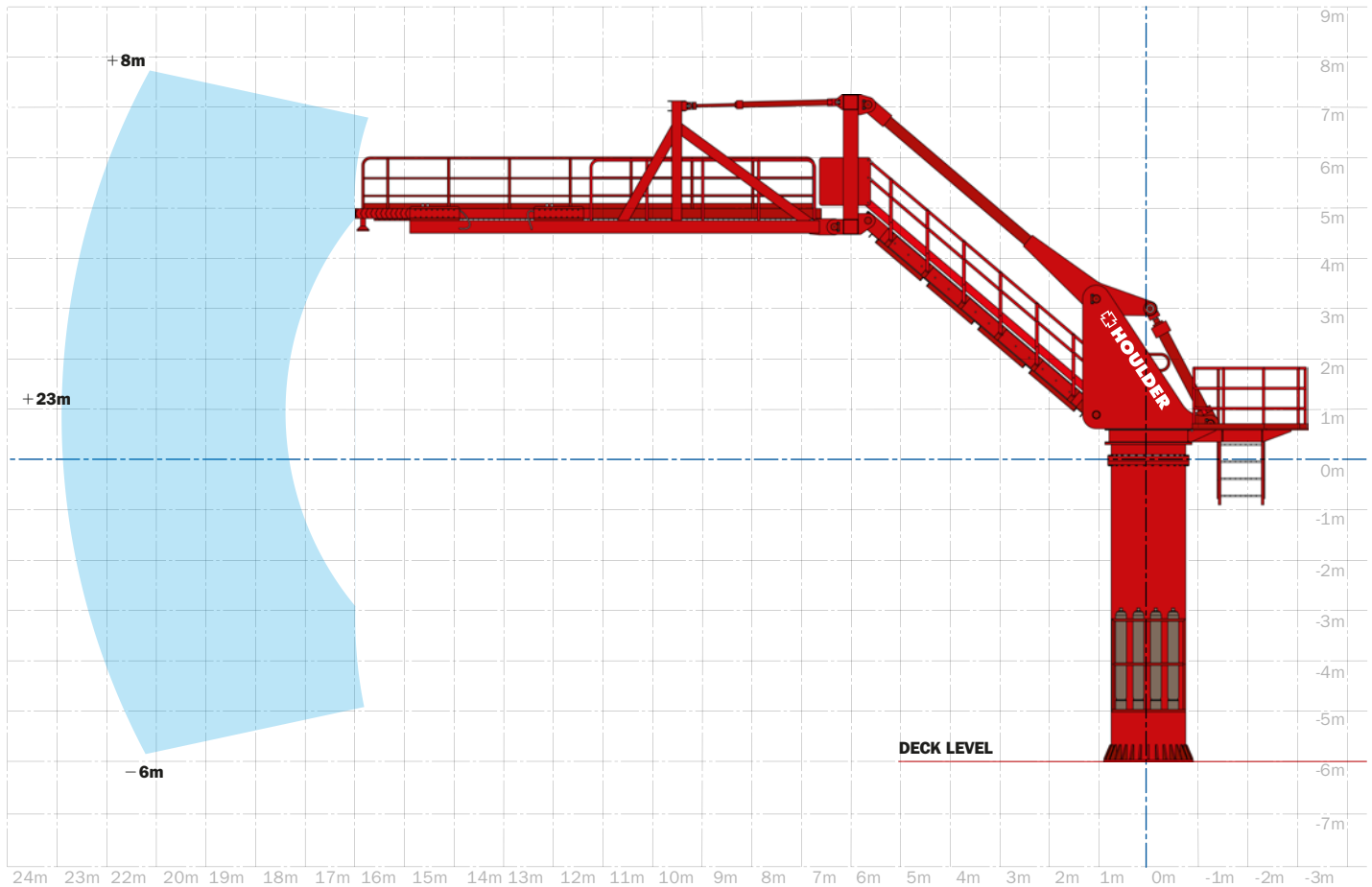
KEY FEATURES:

- + Suitable for offshore continuous personnel transfer
- + Compensates for vessel motions in up to 3m Significant Wave Height
- + Active motion compensation for quick deployment
- + Monitored passive compensation for long operational range
- + 23m horizontal reach
- + 360° slew capability

The Personnel Transfer System actively compensates for vessel motions during deployment. This allows for fast, accurate connection with the receiving structure or vessel.

During personnel transfer the system operates in a passive stay-by mode. In this mode, system movement amplitude is monitored ready to interrupt transfer in a safe and controlled manner when safe envelope limits are reached.

PERSONNEL TRANSFER SYSTEM WORKING ENVELOPE:



MAXIMUM TRANSFER VESSEL MOTIONS:

- + Heave: $\pm 5\text{m}$
- + Sway / Surge: $\pm 1.5\text{m}$
- + Roll / Pitch: $\pm 6^\circ$
- + Yaw: $\pm 4^\circ$

TRANSFER FEATURES:

- + Transfer from port and starboard
- + DP Vessel capability required
- + Vessel stands off the offshore structure during transfer

PERSONNEL TRANSFER SYSTEM FEATURES:

- + Aluminium and steel structure
- + System Weight 25 tonne
- + SWL 350 kg
- + Operational temperature -20 C° to $+35\text{ C}^\circ$

Contact us:

Houder Marine Equipment
 22 Witney Way
 Boldon Business Park
 Tyne & Wear
 NE35 9PE,
 UK

Tel: +44(0) 0191 536 2777
 Email: Enquiries@houderltd.com
 Web: www.houderltd.com